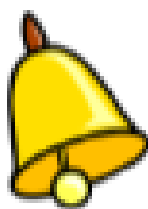


Pisa

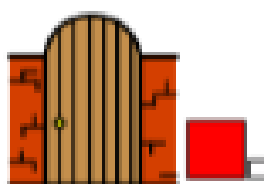
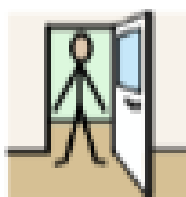
Un giorno alle Collezioni Egittologiche di Pisa





Suona

il campanello

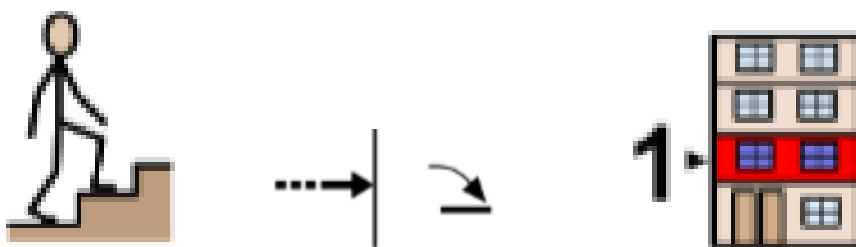
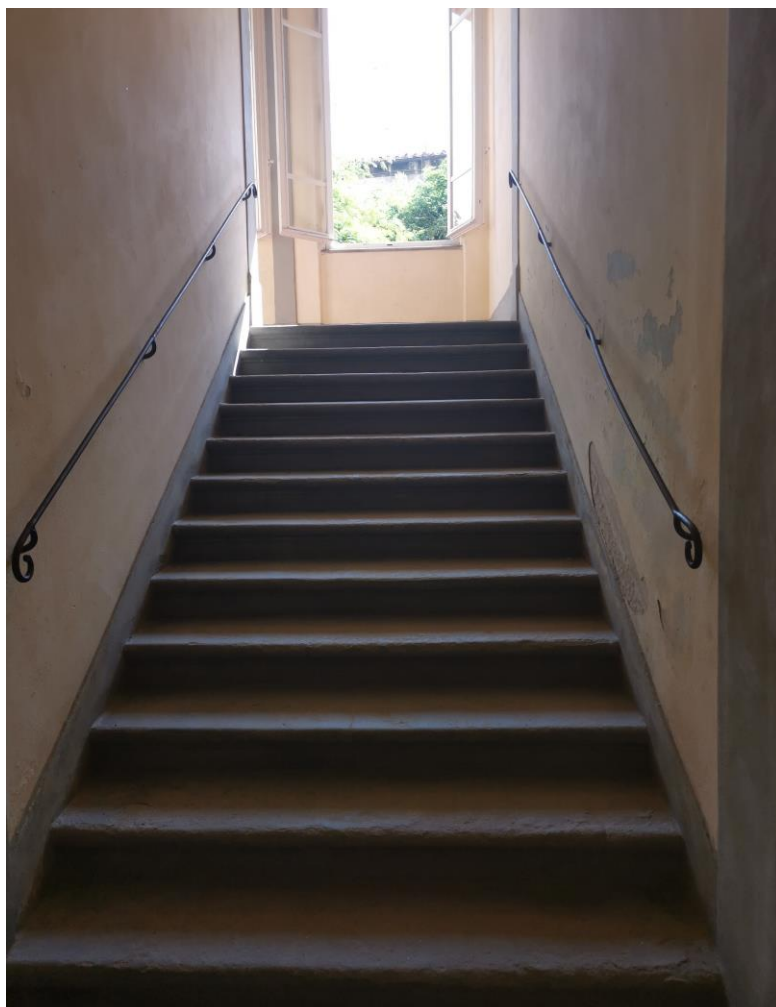


Entra

nel

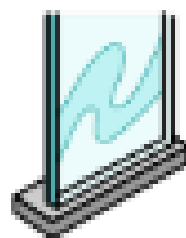
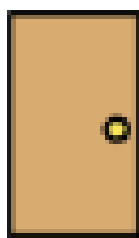
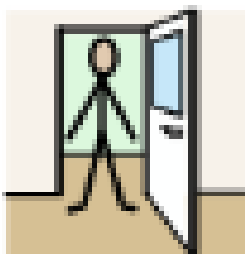
portone

marrone

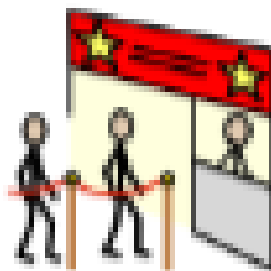
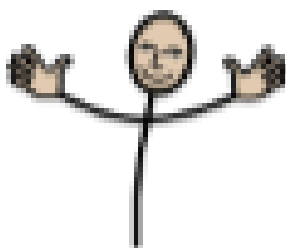


Sali le scale fino al primo piano





Entra nella porta vetrata.



Benvenuto      nella      biglietteria

RICEVUTA n. 30

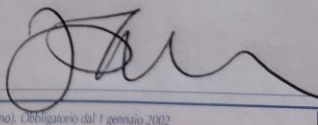
data \_\_\_\_\_

Ricevuto da SCUOLA PRIMARIA

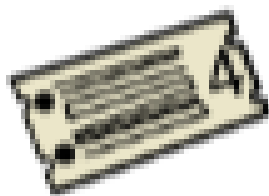
€ Ø (IN LETTERE)

per INGRESSO COLLEZIONI EGITTOLOGICHE

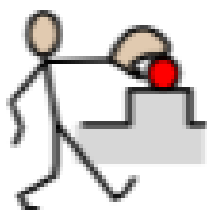
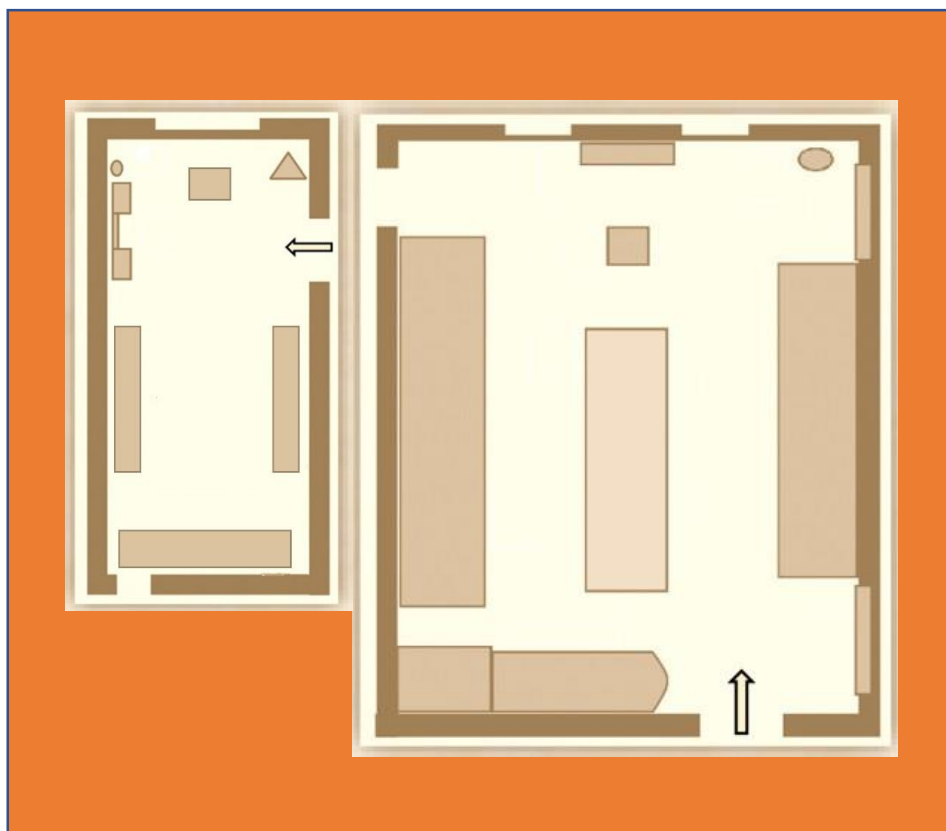
TOTALE € Ø (IN CIFRE)



6304 C (d) Il modello è predisposto per l'utilizzo in Euro e centesimi di Euro (retino). Obbligatorio dal 1 gennaio 2002 1

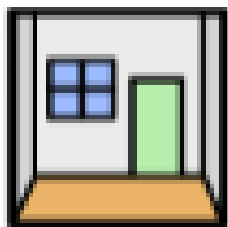
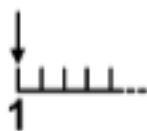
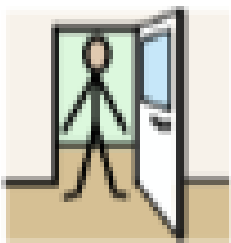


Ritira il tuo biglietto

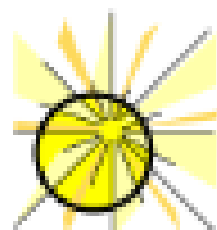
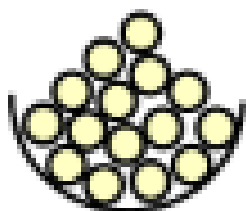
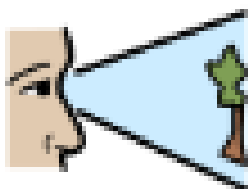


Prendi la mappa





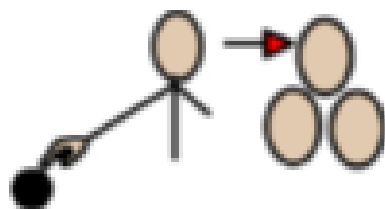
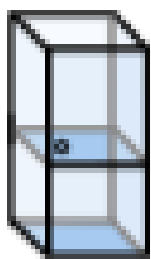
Entra nella prima sala



Tu puoi vedere tanti

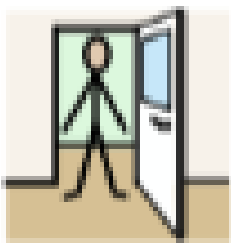
oggetti

preziosi

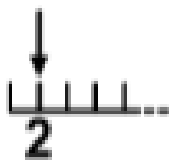


Stai attento alle vetrine.

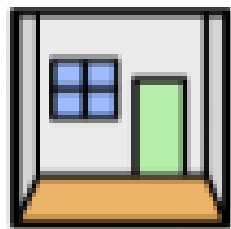
Non toccarle



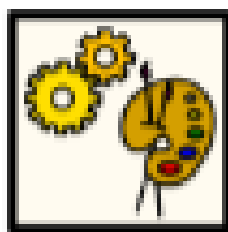
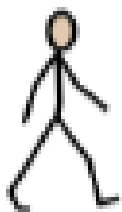
Entra



nella seconda



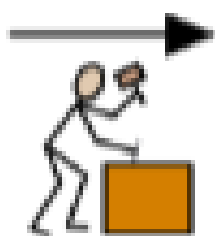
sala



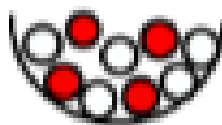
Andiamo nel laboratorio



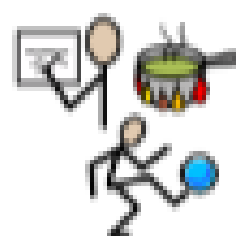
Insieme



faremo

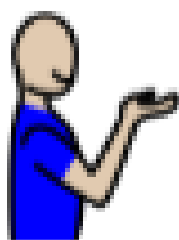
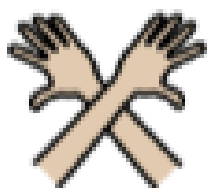
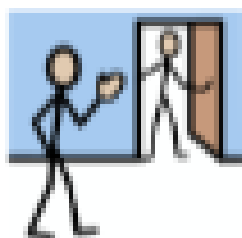


alcune



attività





La visita è finita. Grazie di essere venuto. Ciao!